



Travel to Maxim





Introduction

We have put together the following information to help give an understanding of the transport links to and from Maxim Park

If you require further information please feel free to contact the team directly:

01698 732233 enquiries@maximpark.co.uk

Contents

General travel information

- 7 **Overview**
- 9 **Accessing Scotland**
- 11 **Public transport**
- 15 **Sustainable travel**
- 17 **Maxim amenities**
- 19 **Local amenities**
- 21 **Workforce**
- 23 **Headline results**
- 25 **Travel information – by location/postcode**
- 27 **Contact**

General travel information





Situated perfectly

With a central location and excellent road, rail and air links, Maxim Park can effortlessly serve one of the largest catchment areas in Scotland. This document provides a greater understanding of the park and reveals why Maxim is such an attractive location for occupiers.

The park benefits from excellent car and public transport links. There are over 160 buses visiting Maxim every day; with services connecting the park to Glasgow, Edinburgh and the surrounding commuter towns.

Maxim also benefits from 7 railway stations within 5 miles, providing direct links with Glasgow, Edinburgh, Newcastle and London.

Maxim is at the core of one of Scotland's largest recruitment catchments with over 30% of the national population within easy reach. The Maxim catchment covers a significant area of Glasgow and in turn offers an attractive commute and shorter journey times for employees and visitors.

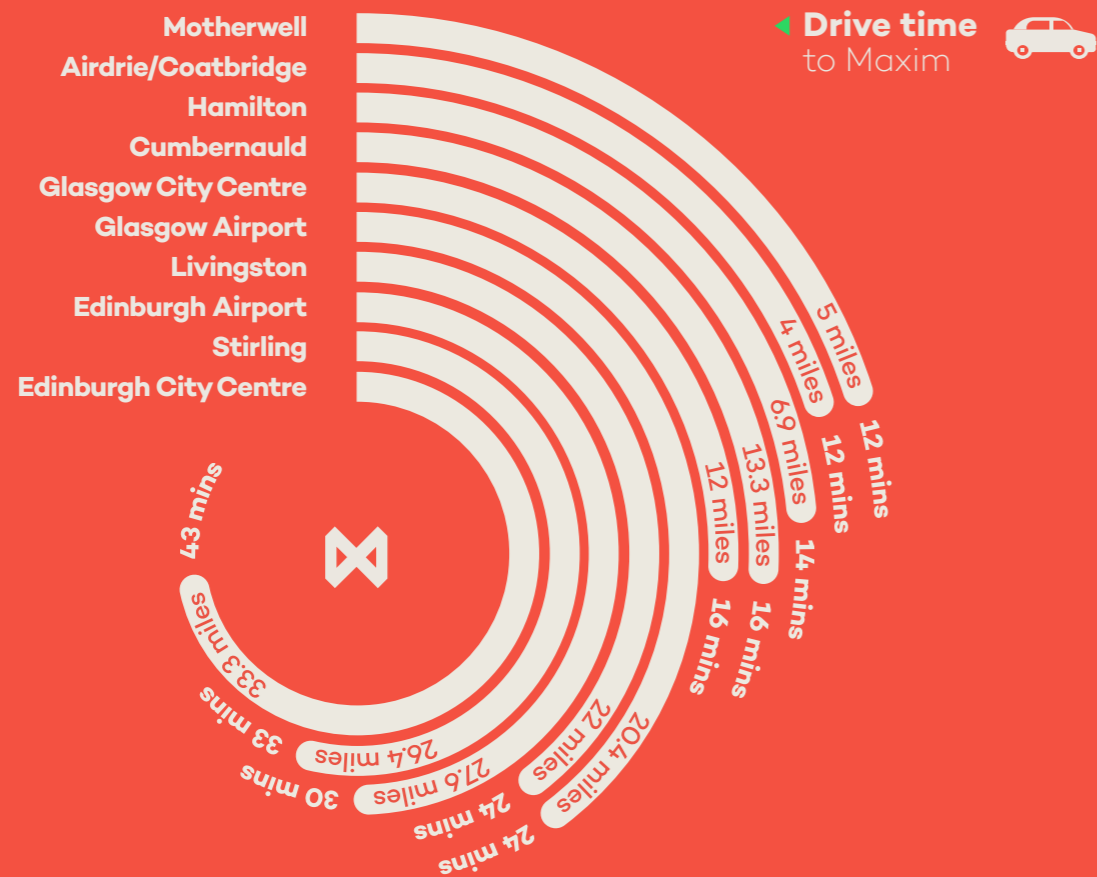
The park benefits from a fantastic range of retail and leisure amenities for staff, to help sustain the all important work/life balance. The on-site facilities include a children's nursery, a bistro and coffee shop, a hotel and restaurant, a deli sandwich shop, a putting green, a hair salon, fitness and wellbeing classes.

Maxim's on-site management team is on hand to provide staff and visitors with support and advice in relation to traveling to and from the park.



Accessing Scotland

Maxim Park is situated next to Scotland's M8 motorway and is also easily accessible by the M73 and M74 motorways. This positions Maxim between Scotland's two largest cities; Glasgow and Edinburgh. Since the recent M8/M73/M74 upgrade, Maxim employees reported on average a 28% reduction in commute time to the Park.

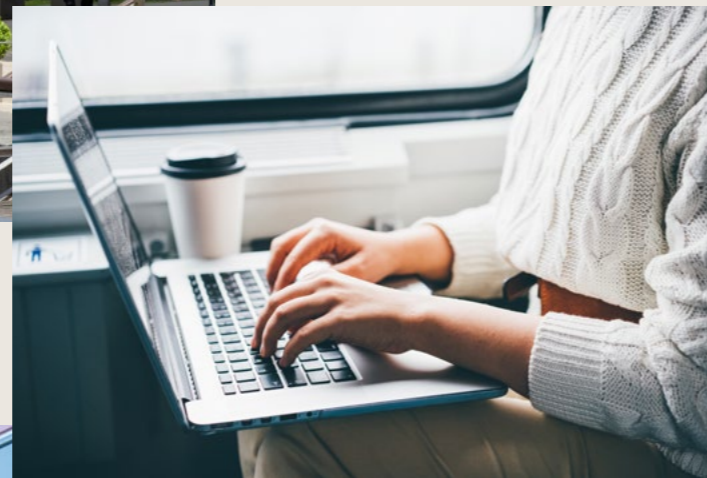


Source: Google Maps





Public transport



Bus

Over 160 buses visit Maxim Park every day. 202 and 242 First bus services run every 20-30 minutes during peak times between Maxim and the local railway station hubs of Motherwell and Airdrie. The bus service also links up the surrounding communities with stops at Coatbridge, Whifflet, Holytown and Wishaw.

Maxim staff will benefit from First's range of day tickets, returns, weekly, 4 weekly and 10 weekly discount tickets. The service also accepts Zonecards, providing tenants with an easy and cost effective way of traveling.

In addition, both the Citylink 900 and Citylink AIR bus services run every half hour, 7 days a week from Maxim to Glasgow City Centre, Edinburgh Airport and Edinburgh City Centre. Glasgow City Centre is accessible within 20 minutes, Edinburgh Airport 35 minutes and Edinburgh City Centre is reachable in under one hour. Maxim card holders receive a considerable discount on both Citylink bus services.

From Buchanan Bus Station there is a Glasgow Airport Shuttle bus which runs every 10 minutes, offering an attractive interchange option for Maxim passengers. Regular international and domestic flights serve both Glasgow and Edinburgh Airport.



citylink 900

First

citylinkair

Z
ZoneCard

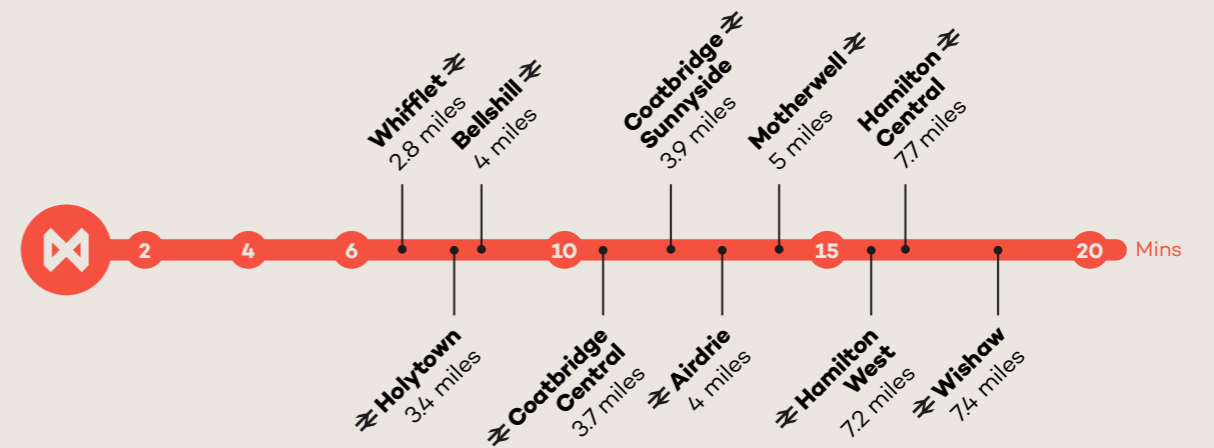


Train

There are 7 railway stations within 5 miles of Maxim Park. There are direct links to Glasgow and Edinburgh from Motherwell, Airdrie, Coatbridge, Hamilton, Bellshill and Holytown train stations. There are also direct trains to London and Newcastle from Motherwell station.

Distance from Maxim to the surrounding railway stations ▼

Source: Google Maps



The below sample railway journeys are served by buses connecting to Maxim which run every 20-30 minutes at peak times.

| Train service | Trains per hour | Average journey time | Operating times |
|---|-----------------|----------------------|-----------------|
| Glasgow—Motherwell | 5 | 28 mins | 05:50—23:50 |
| Edinburgh—Motherwell | 2 | 50 mins | 06:24—23:13 |
| Glasgow Queen St—Airdrie/Coatbridge Sunnyside | 6 | 25 mins | 05:47—00:23 |
| Edinburgh—Airdrie | 3 | 44 mins | 06:07—23:30 |
| Glasgow—Whifflet | 4 | 29 mins | 06:27—23:28 |
| Glasgow—Wishaw | 3 | 30 mins | 06:52—23:20 |
| Glasgow—Cumbernauld | 4 | 36 mins | 05:28—23:52 |
| Cumbernauld—Whifflet | 1 | 11 mins | 06:12—22:32 |
| Livingston North—Airdrie | 3 | 20 mins | 06:28—23:43 |
| Livingston South—Holytown | 1 | 34 mins | 06:23—23:26 |
| Train service | Trains per day | Average journey time | Operating times |
| Newcastle—Motherwell | 8 | 2hrs 15 mins | 07:35—19:35 |
| London Euston—Motherwell | 6 | 4hrs 20 mins | 10:30—23:50 |

Sustainable travel

Bike

Maxim Park benefits from close proximity to a number of local cycle and walking routes as well as having bike parking, showers and changing facilities available at each building situated within the park.

The surrounding towns of Holytown, Bellshill, Motherwell, Whifflet, Coatbridge, Airdrie and Kirkwood are all within a 5 mile commute.

The recent motorway project delivered 16km of new and improved cycle bridges and paths ensuring Maxim is connected to the local workforce.

Maxim works closely with Bike for Good and North Lanarkshire Council to promote cycling at the park. Both organisations host cycling events and provide Maxim staff with Cycle Scotland and walking route maps.

Maxim has introduced a bike hire scheme so that staff can try cycling to work. Maxim also provide staff with necessary cycling safety equipment.

Cycle times to Maxim

| | |
|------------|---------|
| Holytown | 13 mins |
| Bellshill | 23 mins |
| Motherwell | 29 mins |
| Whifflet | 19 mins |
| Coatbridge | 23 mins |
| Airdrie | 20 mins |
| Kirkwood | 18 mins |



Maxim/Eurocentral car share

Not only does car sharing help protect the environment, it can also save you a lot of money. The average commuter who car shares saves over £900 a year.

maxim.liftshare.com is available to Maxim and Eurocentral employees. The scheme is completely free to use for all members of staff.

Electric vehicle charging points

Maxim has 4 state-of-the-art vehicle car charging points to include two triple outlet rapid chargers and two dual outlet fast chargers. Staff and visitors are able to charge their electric vehicle in around 30 minutes.



Maxim amenities



Maxim Park provides a wide range of on-site amenities for employees and visitors to enjoy ensuring that Maxim is a fun and sociable place.

Maxim's on-site leisure and retail amenities include: a luxury hotel and restaurant; a private nursery, a putting green, a deli, sandwich shop, bistro and outside catering.

Maxim has its very own Events Manager who encourages staff to get involved in various park activities including summer BBQs, live music gigs, sports days and charity events. The park also benefits from regular health and wellbeing sessions to include Yoga, Aikido and Corporate Massage.





Local amenities

As well as our fantastic on-site amenities at Maxim, the park is only a short commute away from a great variety of facilities and services. Some examples are listed here:



Glasgow city centre

There is a fantastic array of designer shops, stylish bars, restaurants and bistros in the city centre. There are also major cultural attractions available including the Gallery of Modern Art, the Royal Concert Hall and the Theatre Royal. The City Centre is also home to the tallest cinema in the world!

✂ — 20 Mins



Glasgow Fort

The Fort is one of Scotland's top shopping destinations. There is a vast selection of some of the UK's top retail brands including Zara, Next, M&S and more. There are also numerous places to eat and drink, as well as a cinema to catch up on all the latest Hollywood blockbusters.

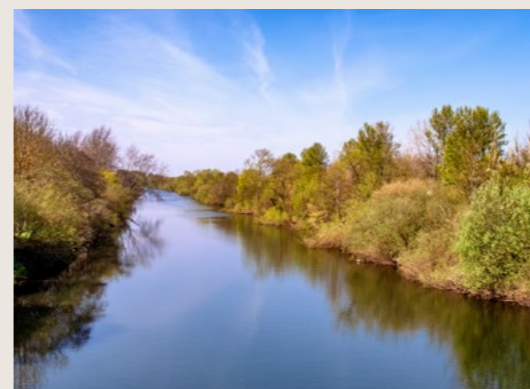
✂ — 10 Mins



Chatelherault Country Park

This 5 star visitor attraction offers breath taking views across the central belt, Ben Lomond and the Campsie Hills. The park also has 500 acres of woodland and countryside and features over 10 miles of routed pathways and nature trails. Chatelherault is also home to the stunning Cazdow Castle, a museum, an outdoor adventure playground, picnic facilities and a café.

✂ — 21 Mins



Strathclyde Country Park

The park is one of the most popular attractions in the central belt of Scotland, which is no surprise given it's beautiful surroundings and fantastic leisure amenities. Some of the facilities at the park include a theme park, a bowling alley, a gym, bike hire, outdoor water sports and numerous outdoor adventure playgrounds and picnic areas.

✂ — 17 Mins



Edinburgh city centre

The city of Edinburgh is steeped in history and cultural brilliance. Some of the sites include: Edinburgh Castle, the Scottish National Gallery, and the Scott Monument. Edinburgh is also home to luxury stores and beautiful boutiques as well as limitless bars and restaurants.

✂ — 40 Mins



Hamilton Palace Grounds

Situated just off the M74 motorway, Hamilton Palace Grounds is home to a top of the range Virgin Active gym complete with indoor and outdoor football pitches and tennis courts. In addition, only a few minutes' walk away you will find a cinema, a variety of retail stores, major supermarkets and a wide selection of restaurants and bars.

✂ — 15 Mins



Workforce



Travel to Maxim



The catchment surrounding Maxim has a young profile, with a large proportion of the workers aged 35 and under. Furthermore, the park sits at the heart of the third largest pool of students in Britain. There are 153,000 students from 12 Universities in the wider area between Glasgow and Edinburgh with 40,000 graduates every year.

In addition, there are a further 10 Higher Education colleges in Central Scotland with over 20,000 students per year going through courses.



Location Overview

Maxim Park has one of the UK's largest recruitment catchments with over 3.4 million people accessible within a 60 minute commute (over 1.3 million of which are of working age).

The total population within a 15, 30 and 60 minute catchment of Maxim ▼

| Population by age | Within 15 mins | % for area | Within 30 mins | % for area | Within 60 mins | % for area |
|-------------------|----------------|------------|----------------|------------|----------------|------------|
| 0-4 | 25,910 | 6% | 102,057 | 6% | 193,059 | 6% |
| 5-14 | 49,197 | 11% | 190,995 | 11% | 361,200 | 11% |
| 15-24 | 59,625 | 13% | 235,310 | 13% | 447,050 | 13% |
| 25-34 | 62,683 | 14% | 252,056 | 14% | 474,455 | 14% |
| 35-44 | 59,097 | 13% | 236,152 | 13% | 448,122 | 13% |
| 45-54 | 69,156 | 15% | 268,156 | 15% | 515,831 | 15% |
| 55-64 | 55,359 | 12% | 211,395 | 12% | 414,246 | 12% |
| 65+ | 74,116 | 16% | 289,799 | 16% | 581,718 | 17% |
| Total | 455,143 | | 1,785,920 | | 3,435,681 | |





Headline results

Working from 29 example postcodes:

Travelling by car

23 of the 29 example postcodes were within a



14 of those were within a



The longest drive time was 35 minutes, the shortest drive time was 9 minutes.

| | |
|---|---------|
| South Lanarkshire College – East Kilbride | 35 mins |
| Lidl – Motherwell | 9 mins |



Travelling by public transport

16 of the 29 example postcodes journey times were within



4 were within



7 were within



Cycling

24 of the 29 example postcodes were within a



12 of those were within a



The shortest ride time was 16 minutes.

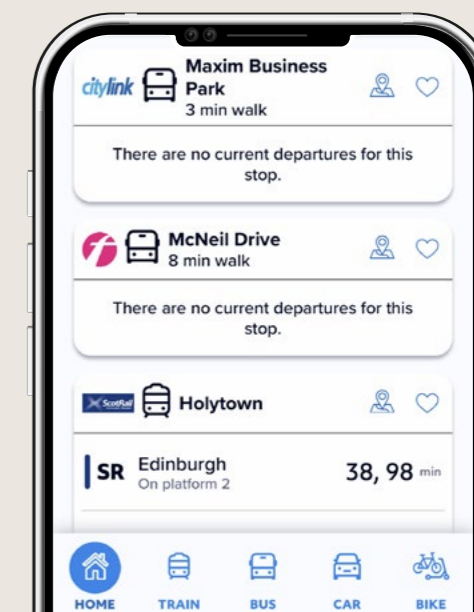
Holytown Train Station 16 mins

Transport advice and information on Maxim staff **discounts** on public transport services **saving up to £13.30 per 10 journey ticket** available from the Maxim Management Office

Live travel updates on our new app



Scan to download app





Maxim Management Suite
Maxim 3, Parklands Avenue, Eurocentral, ML1 4WQ

01698 732 233 enquiries@maximpark.co.uk

 MaximScotland  MaximParkScotland

For leasing enquiries please contact:



maximpark.co.uk
WORK-LIFE-BALANCE